



# Prospectus Years 7–11



# Contents

Welcome	4
Vision and values	6
Introducing Bosworth Academy	8
The Laureates	10
Academic life - KS3	12
Academic life - KS4	14
Working Together and Expectations	16
Support	18
Post 16 Sixth Form	20
PE and School Sport	22
Real LiFE	24
Community	26
Practical Details	27
Alumni	28
LiFE Multi-Academy Trust	29
Contact Details	30





# Welcome



Simon Brown  
Headteacher

At Bosworth Academy, we are dedicated to guiding every student towards adulthood as confident, capable, and successful individuals, ready to take charge of their futures with passion and purpose.

Our students thrive in a collaborative, inclusive environment where everyone's contributions are valued, and a strong sense of community and responsibility is cultivated. We believe that each student is unique and important and deserves a first-class education with high expectations and personalised support. Every child has the potential to achieve at the highest level, and our role as educators is to nurture a deep love of learning, resilience, and the belief that they can excel through hard work, perseverance, and practice.

We focus on ensuring learning is authentic, connecting classroom experiences to real-world challenges, so students can see the relevance and value of learning. At Bosworth Academy, we also prioritise developing student agency, empowering students to take ownership of their learning, make informed choices, and become independent, self-motivated learners who are prepared to shape their futures.

Alongside academic excellence, we develop the 6C global competencies; Character, Citizenship, Collaboration, Communication, Creativity, and Critical Thinking, - which equip our students to thrive in a complex, fast-changing world. By fostering these essential skills, we help students become adaptable, innovative, and responsible global citizens who can confidently navigate future challenges. Through personalised teaching and tailored support, we empower every student to exceed expectations and

raise their aspirations, with a clear commitment that 'no student will underachieve'.

We know that education is a partnership between school, parents, and the wider community, and we value the strong relationships we've built with our family of primary schools, top universities, and local and national businesses. This enables us to offer an ambitious, seamless pathway from Key Stage 3 to Sixth Form, preparing students for university, apprenticeships, and beyond. We are proud to be one of the few institutions in Leicestershire to offer such an exciting 11-to-19 educational journey.

Our commitment to our students is reflected in their outstanding outcomes. Year after year, we raise achievement across a wide range of qualifications. Eight out of ten students achieve grade 4 or above in English and Maths, and our results in the challenging English Baccalaureate are double that achieved in schools nationally. In our Sixth Form, over 85% of students progress to university, with nearly a third of A-level grades awarded A\*/A.

On behalf of our entire staff, I am delighted to welcome your child to Bosworth Academy and look forward to sharing in their success as they take the next step in their educational journey.

Simon Brown  
Headteacher



Andy Dolinski  
Co-Head of School



Kathleen Baxter  
Co-Head of School

Be better than you  
thought you could be



The school has a broad, balanced and highly ambitious curriculum offer for pupils.

To meet the staff and to see the Academy in action, please call us and we will be happy to arrange a visit to welcome you. We visit our feeder schools regularly, and staff from Bosworth Academy will meet with you there if that is more convenient.



# Vision, values & ethos

## Vision

Bosworth Academy is consistently outstanding in its delivery of outcomes for our young people and for our community. Bosworth is an unstoppable force for affecting social mobility.

## Values

'No student will underachieve' means: Outstanding outcomes for every child of every ability from every background no matter what.

'Be better than you thought you could be' means: We understand that our role is not to ensure students reach their potential, it is to help define that potential.

## Ethos

We do this in an environment which is inclusive, exciting, varied and highly aspirational. The individual is recognised and celebrated. Striving for excellence and challenge in all that we do, we seek out feedback and positive criticism. We believe in the capacity for continual improvement and appreciate the role of leadership, never giving up and accepting that our work is done. We enjoy, achieve and embrace our responsibility as a force for good. We can, and will, make a difference through the empowerment of learning.

Bosworth Academy welcomes students of all abilities and backgrounds and aims to prepare them to take their place in society. We value the education of each student equally, and believe that all members of the school should feel important, and should achieve their maximum potential. The staff aim to provide a high quality of teaching and tutoring so that each student's experience at school is a positive and happy one.



Bosworth Academy will provide:

- Preparation for life in an environment where everyone can aim high, be successful and secure
- Individual support through a 21st century curriculum

Bosworth Academy will engage with the wider community by:

- Using a full range of learning resources
- Celebrating cultural diversity
- Promoting high standards
- Enabling participation in local, national and international communities
- Positively valuing the contribution of everyone
- Developing self-esteem and respect for others

We demonstrate our commitment to these statements by:

- Creating varied and challenging teaching and learning opportunities
- Being reflective about and, consistently developing our practice
- Providing independent and collaborative ways of working
- Maintaining a stimulating learning environment
- Monitoring and guiding all learners
- Making the best use of our resources
- Developing self-reliant and high-achieving lifelong learners



# Be better than you thought you could be





# Introducing Bosworth Academy

Bosworth Academy is a successful and forward looking co-educational comprehensive school comprising the Laureates Key Stage 3, Key Stage 4 and the Oaks Post 16 Sixth Form, with over 1500 students in 11- 19 full time education.

Each year over 250 students begin their journey with us in Year 7, while a similar number of older students join our sixth form in Year 12 either by deciding to return to us after completing GCSEs or as new students from other schools. Our induction process at each point of entry aims to ensure all students feel welcome, regardless of when they begin their journey with us.

We continue to develop and expand our out of hours learning, sport and leisure programmes, involving many local community clubs, groups and societies.

We enjoy an excellent reputation for the quality of teaching and learning in a caring, friendly and exciting environment. Our experienced, well-qualified staff and excellent facilities help us to provide stimulating and fulfilling educational experiences for everyone.

We expect high standards of our students and provide opportunities and challenges to enable our students to achieve academically whilst developing wider skills that create fully rounded individuals.

## Facilities

Situated on a large, pleasant campus on the edge of Desford, overlooking open countryside the school enjoys the benefit of light, modernised, well-equipped buildings.

There are specialist teaching areas, which are grouped together in subject and faculty areas so that resources can be effectively utilised.

The school has embraced the many benefits that IT, digital and handheld computer devices have to offer in supporting student learning and the whole school enjoys the support of and efficient world class IT infrastructure.

## Areas of specialism:

- Art, Design & Technology
- Cultural Studies
- English
- ICT and Business
- Human and Social Studies
- Mathematics
- Modern Foreign Languages
- Physical Education
- Science

The Physical Education faculty enjoys a range of dedicated spaces from our 25 metre swimming pool, to our amazing basketball courts and our indoor and outdoor 3G pitches.

Within our Cultural Studies faculty students enjoy the specialist Drama studio and theatre as well as rehearsal rooms and a dedicated dance studio. Media Studies students have a professional and well equipped media suite for video and digital media production.



Bosworth Academy's library, The Compass, provides resources and support to enhance the curriculum, to encourage independent learning and reading for pleasure.

It is a bright, attractive space where students can choose to work in a variety of learning zones and teachers can choose to work with a whole class on research projects.

Our collection of resources is continually developing to provide the best digital and printed resources to support our students. Our librarian is available to help students find exactly what they need.



Our large central hall is used by the academy for talks, assemblies and student events. It is also used extensively by local clubs and groups.

Adjacent to the hall is our dining area where students are able to purchase a range of food at break and lunch.

We are committed to investment in improvements and refurbishments in order to create a world class learning environment.







# The Laureates

Bosworth Academy Laureates will bring out the best in your child through outstanding teaching and learning where a personalised approach ensures every student fulfills their potential.

The Laureates is designed to ensure every student feels safe in the setting with rooms designed to facilitate all types of learning. In Year 7 tutor rooms are based in the Laureates area with access to 'The Compass Information Centre' to enable research, complete group work or focus on home learning. For subject specific learning, students have controlled access to the wide and varied whole school facilities. Bosworth Academy Laureates have embraced the value that new technologies offer in supporting learning, and every student is provided with a brand new computer tablet to use at school and at home. The Laureates benefits from a separate well-equipped play area.

## Transition

Moving on from primary school can be an apprehensive time, both for the children and their parents. Our transition programme is designed to smooth the process, alleviate any fears and encourage a feeling of excitement and anticipation.

We will carry out one-to-one interviews with every student who will be attending our school, so we can find out what they enjoy and get to know them before they arrive. We use this to get to know their needs and aspirations, and to enable us to tailor their experience.

Students will take part in an induction programme in the early days of the autumn term. This will help build friendships, ensure there are familiar faces in every lesson, and encourage teamwork in class as the curriculum is introduced. We will also host a welcome evening for parents, and during the first term, parents and carers can meet their child's tutor and during our meet the tutor evening where you will meet your child's tutor face-to-face and discuss how they have settled in, how the school works and the plans for your child's education throughout the year.

Each individual will be recognised for their strengths, and it is our aim that, by the end of Year 7, every single student will be celebrated for their excellence and contribution to the school. This excellence may be identified through either academic success, or enrichment and enterprise activities that we offer and development of their 6Cs.

Bosworth Academy Laureates will create a strong academic foundation by broadly following the national curriculum subject but this is done through an innovative 'RealLiFE curriculum'. Our staff will teach literacy and numeracy in all subjects and the school will make these key subjects relevant to the real world through expeditionary learning activities throughout the year. This excellence may be identified through either academic success; or enrichment and enterprise activities that we offer.

We are fortunate to have Post 16 students on site who are outstanding role models for younger students. They are in education because they choose to be. They have been highly successful, and are aspiring to great things. We will capitalise on the advantages that having older students gives us to further instil ambition and high expectations, from the first day that students come to us. Ofsted recognised that our students' contribution to our community was outstanding.



## A school within a school

The Laureates is 'a school within a school' for younger pupils. This helps new arrivals have a chance to develop their confidence as they adjust to a much bigger school. This greatly supports the welfare of the school's youngest pupils.



Liam Grest, Head of Key Stage Three





# Academic Life

## Key Stage 3 curriculum

The Real LiFE Curriculum, followed in key stage 3, helps students to understand how learning from each subject can be combined to make a positive difference to themselves and the world around them.

Students receive regular coaching in sessions called CREW (Coaching, Reflection, Enrichment and Wellbeing) which teach students how to organise and manage their time so that they can take greater responsibility for their learning and build on their personal strengths and interests.

Each term students also take part in a “mission” themed around a real world issue that tasks them to apply knowledge gained from a range of subject areas. Examples of learning through missions include being taught to design a mobile app and pitch the idea to experts from the Green Tech industry, or to start a business with an initial budget of £10 that is ethical and sustainable during the 10X Challenge mission.

The Real LiFE curriculum is delivered through each of our traditional subject areas but done so in a way that each subject contributes their part to each mission. Our subject areas are:

- English
- Mathematics
- Science
- History
- Geography
- Information Technology
- Music
- Modern Foreign Languages
- Religious Studies
- Drama
- Dance
- Physical Education
- Personal Social Health Education
- Art, Design and Technology

### Behaviour for learning

Good behaviour and a positive mindset are the basis of a happy and productive learning environment, so we set high expectations for the standards of behaviour in our school. We will reinforce this with a culture that celebrates hard work and accomplishment in all aspects of school life, creating a culture where students are able to unlock their full potential and strive for excellence. This is backed up by a system of rewards and celebration assemblies that recognise the very best of our students’ academic, social, creative and sporting progress. We treat our students as sensible young people who are able to take responsibility for their actions. We therefore make sure that they understand the relationship between effort and achievement, and between responsible behaviour and exciting opportunities. We have zero tolerance towards bullying.

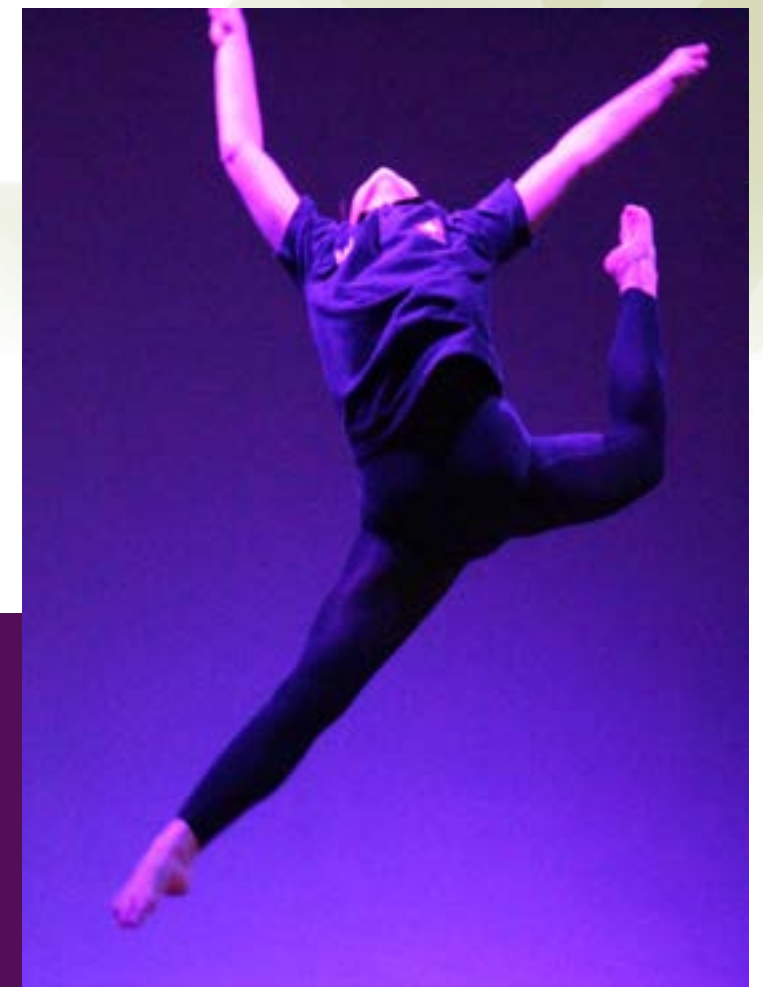
Through our behaviour curriculum we aim to develop the global 6C competencies in our students in order that their Bosworth Academy journey equips them for a life beyond school. The 6C competencies being: character, citizenship, creativity, critical thinking, collaboration and communication.

High expectations,  
higher aspirations

High  
expectations

### Co-Curricular Activities

We have adopted the good practice of universities with a rich and varied programme of co-curricular activities which compliment the key stage 3 curriculum. All of our faculty areas contribute to opportunities beyond the classroom and the programme provides an opportunity to follow an interest or talent through sessions at breaktime and after school. Our popular co-curricular opportunities include the Bosworth Theatre Company, Sports Leadership and a wide-range of sporting opportunities both within school and through fixtures against other local schools.



Where students are  
happy and thrive





# Academic life

## Key Stage 4 curriculum

We offer a broad, balanced, and enriching curriculum tailored to each student's abilities, ensuring every individual progresses successfully. Through diverse teaching techniques, we encourage informed decision-making, self-control, and motivation, preparing students to move confidently into the next phase of their education.

Our Key Stage 4 curriculum is divided into two parts: core and options, delivered through 27.5 learning hours per week including our tutor programme.

The core curriculum equips all students with the skills and qualifications necessary for further education and training while deepening their understanding of the world. We consider English, Maths, and Science to be the 'enabling subjects'. Additionally, students will study a suite of 'globalising and self-worth subjects,' including a language, either Geography or History, Ethics, Philosophy and Religious Studies, PSHE, and Physical Health.

Beyond these core subjects, students can also choose two additional subjects from a wide range of options. Our Options booklet provides detailed information on all the subjects offered at Bosworth Academy. Regardless of the subjects selected, students will have the chance to explore, question, and think critically about their learning journey.

In most subjects, students are taught in mixed ability groups, fostering collaboration and inclusion. In Mathematics and Science, students are grouped by similar ability, ensuring both targeted support and high-level challenges are appropriately provided to all learners. This approach allows every student to receive the individual attention and guidance they need to excel.



## Religious Education

We take pride in our diverse and multicultural community. At Key Stage 4, every student undertakes a GCSE (short course) in Religious Studies. This not only provides an additional qualification but also develops a broad understanding of various religions and cultures. Importantly, it equips students with the ability to communicate effectively with a wider range of people. They gain invaluable skills in debating and analysis. Religious education is woven throughout many curriculum areas.

Our Academy is inclusive and welcomes individuals of all faiths and those with no religious affiliation. Weekly assemblies are held for each year group, focusing on either religious or moral themes.

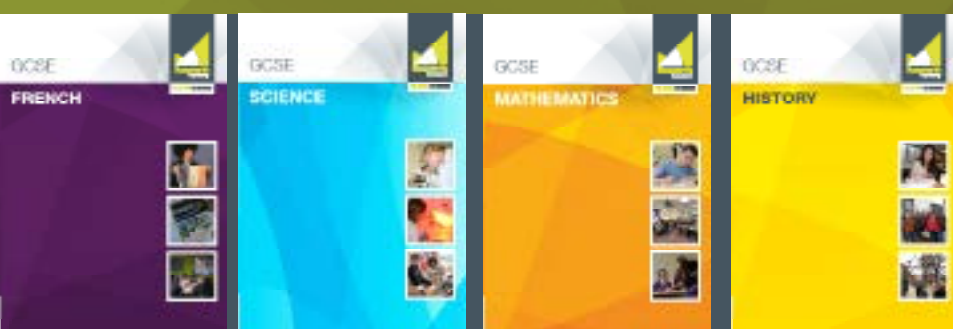
## Sex and Relationship Education

We recognise that most students will have already learnt the facts of reproduction at Key Stage 3 and possibly at home as well. At Key Stage 4, we focus on deepening their understanding of sexual health and relationships. Our Personal, Social, Health, and Economic (PSHE) education programme provides opportunities for students to discuss and explore various health and relationship topics, including safe sex, sexually transmitted infections, teenage pregnancy, and contraception. Our aim is to help young people develop a mature attitude towards the many choices they will face regarding their health during adolescence and adulthood.



## Health services

Young people at Bosworth Academy can access a confidential, independent counselling service by appointment, providing support and advice on a wide range of health issues. Additionally, we offer specialised guidance through our full-time staff and the Teen Health agency, which provides confidential information, advice, and support services. Parents wishing to know more about these services should contact the Academy.



For full details of our main courses and GCSE options see our separate course guide leaflets or visit [bosworthacademy.org.uk](http://bosworthacademy.org.uk)





# Working Together

## The tutor

Every student belongs to a tutor group, with clusters of tutor groups overseen by a Year Head, providing a supportive structure with the emphasis on monitoring attendance, progress and individual support.

We believe that the welfare of every student is very important, and we strive to create a purposeful, constructive and successful learning environment for all students, and our pastoral care emphasises the need for trust and mutual respect in this endeavour.

Wherever possible, students stay with the same tutor until they leave the Academy.

Tutor groups provide an essential base for individuals to establish strong relationships as they grow into the responsibility of adulthood. The tutor is an important person in the life of the students, monitoring and supporting their progress, as well as providing guidance on work experience, future careers and on Further and Higher Education courses.

## Home learning

We expect students to engage in study at home, as it is not possible or desirable to complete the work for any examination course in the lessons alone. The amount of home working will vary from subject to subject and week to week, and our home learning policy is designed to encourage students to have the responsibility of managing their own time.

We aim to set assignments that will extend and complement the work undertaken in class and we value the support of parents and guardians in achieving this aim.

Homework is recorded electronically by staff using Satchel:One which complements our use of learning technologies such as Google Classroom. This enable us much greater flexibility when setting assignments and projects which can now extend far beyond traditional paper based tasks. Smart Homework also allows students to keep track of their progress and meet deadlines while enabling parents and guardians to remain informed about the work that has been set.

## Reports and parents' meetings

Our robust system of reporting is designed to give insight into progress and to give students helpful and realistic targets to enable them to do their best.

Monitoring of individual progress and achievement in each subject takes place every term, and tutors help students to set personal targets. We expect a record of monitoring grades to be kept up-to-date by students in their planner.

In response to parent feedback, there are six Parents' Evenings throughout the year to discuss student progress and development, and appointments are made using our online booking system.

As well as these specific occasions, parents are very welcome to discuss any aspects of a student's life at any other time, simply by making an appointment, either with the Tutor, Year Head or Subject Teacher. Similarly, parents may be contacted if a subject teacher or tutor feels particular support is needed.

There are a number of other functions that afford the opportunity to meet with Academy staff such as the Excellence Awards Evening, Post 16 Options Evening, and Higher Education Evening. Details of these can be found at [www.bosworthacademy.org.uk](http://www.bosworthacademy.org.uk)



## Expectations

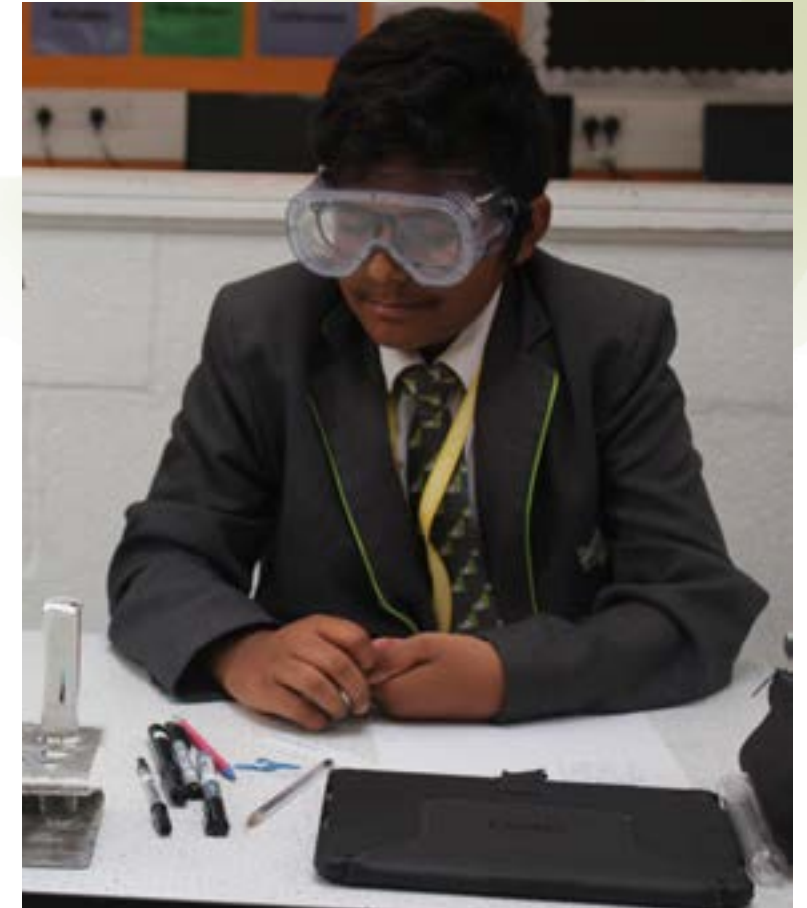
A well organised community requires rules for guidance. These are based on respect for other members of the community, politeness and good manners within the context that our older students should be aspiring to a 'respect and values' ethos. We believe that an ordered, disciplined atmosphere is the best environment for learning. Our Behaviour Policy sets out the school's expectations, and the rights and responsibilities of staff, students and parents/guardians.

These expectations are summarised in our Bosworth Big Three:

- Be Kind
- Every Minute Counts
- First Time, Every Time

In addition, we expect students to follow our 'Five to Thrive' each lesson to help them 'be better than you thought you could be'.

1. Fresh start, each lesson, on time
2. Meet and greet, ready to learn
3. Demonstrate the 'Big Three'
4. One voice at a time
5. 100% engagement





# Support

## Information and communication technology

Our digital network and school Wi-Fi infrastructure gives students and staff access to the almost limitless Cloud-based resources to support learning across the school. Students are encouraged to use mobile technology to enhance their learning and develop independent learning skills. Students can also access their work files from home through the Academy's VLE (Virtual Learning Environment) and Cloud facilities.

Running industry standard software, and state-of-the-art hardware, we aim to give students as much hands-on experience as possible using systems in order to prepare them for a world increasingly dependent upon information technology and digital media.

For more details visit [www.bosworthacademy.org.uk](http://www.bosworthacademy.org.uk)



## Special educational needs

Many young people have problems with learning at some stage in their school career.

Nationally, one child in five is expected to have some kind of special educational need at one time or another. Whatever the nature and cause of their difficulties, such students need extra help and support with their education.

All our students are entitled to the best educational experience we can provide, irrespective of their academic ability.

We aim to provide a climate in the Academy where students with special educational needs feel welcomed and supported. We aim for an environment where vulnerable students feel safe and class teachers, MLT and management are known to be approachable by both students and their parents or guardians.

All students on the special needs record have a pastoral link through the SENDCO (Special Educational Needs and Disabilities Coordinator).

A copy of our policy document can be obtained from the Academy reception or [bosworthacademy.org.uk](http://bosworthacademy.org.uk)

## Allowing students to achieve their potential

## Provision for gifted and talented students

The Academy provides additional support and opportunity to stretch and challenge the most able students. We recognise talent and excellence through two routes: in the academic curriculum subjects; and through the various enrichment activities such as sports leadership, media and music, language and craft based activities.

All such students are placed on our Gifted and Talented register and their progress carefully monitored. They have the opportunity to take additional courses, such as Critical Thinking in Year 11, and to attend special trips and visits, including universities and industry, in order to extend their learning outside the classroom. They also provide peer mentoring across the Key Stages.

We also aim to support students who aspire to reach elite status (national, international and/or professional level) in their chosen sports through our Elite Sporting Potential programme. These students tend to commit a significant proportion of the week travelling to and recovering from training sessions and competitions.

Our ESP programme is designed to provide each ESP student with bespoke support which includes having a designated trained mentor who can liaise with the attendance team and different subject areas to ensure that students are able to balance their sporting aspirations with school work. This can include more flexible timetabling arrangements where necessary.

The ESP students also benefit from being invited to workshops and masterclasses tailored towards reaching their potential in sport, and we actively nominate students from this group for national talent identification camps and recognition for awards.

Previous graduates from this programme (formerly the Junior Athlete Education Programme) include England Women's Rugby World Cup Winner, and captain of the Team GB Women's Rugby 7s team at the 2016 Rio Olympics, Emily Scarratt.

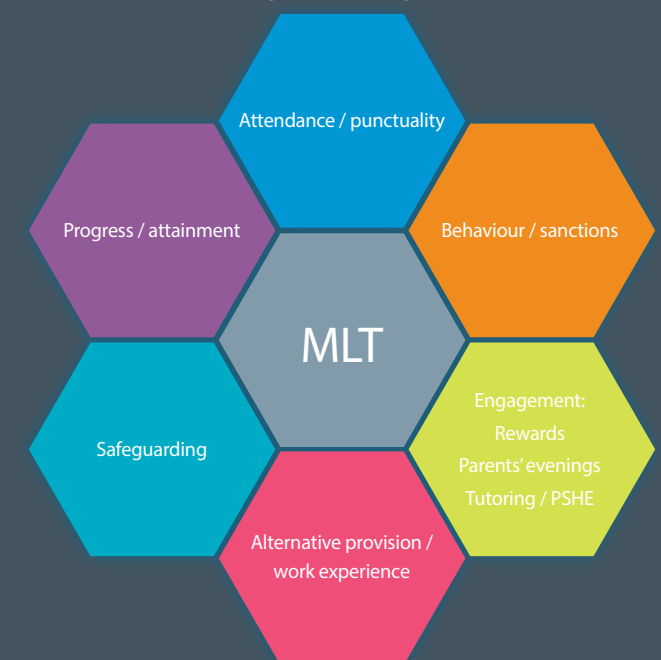
## Maximising Learning Team (MLT)

The Maximising Learning Team aims to support each student to allow them to achieve their potential, and to 'be better than they thought they could be'.

The MLT comprises the Year Heads and the Learning Support staff under the direction of the Team Leader for each Key Stage and the Special Education Needs Coordinator (SENCO).



## Maximising Learning Team (MLT)





# Post 16 Sixth Form



## Post 16 Sixth Form

For Sixth Form students we offer a wide range of courses and a pathway to achieve individual success.

Over half of our Year 11 students usually choose to stay on for two or three years at Post 16 Sixth Form, with many students joining us from other schools.

We help students to choose the course and subjects best suited to their interests, strengths and future plans. At the Post 16 Sixth Form, students enjoy a more mature working environment in the Oaks Post 16 Centre, with their own social room and study area. Class size depends on numbers who have opted for any particular course. Each student will have had to meet the entry requirements for the chosen subjects. Our core curriculum for Post 16 students provides advice and information on the organisation of time, life skills, developing good study habits and entry into university, jobs and apprenticeships.

Please ask for a copy of the separate Post 16 Sixth Form Prospectus if you would like more detailed information about courses, or visit [www.bosworthacademy.org.uk](http://www.bosworthacademy.org.uk)

## Careers Advice and guidance

Students benefit from ongoing support from their tutors with regard to future options, learning pathways, and ongoing careers advice. In recognition of Bosworth Academy's outstanding support in careers advice, the Academy has been awarded the prestigious nationally recognised 'Career Mark'.

Bosworth Academy strongly values careers education, and employability skills are firmly embedded in the curriculum. The Academy has developed numerous links with top UK universities including Leicester and Cambridge, leading local business including Caterpillar, as well as the broader community providing opportunities for students to progress into higher education or the world of work.



There are strong relationships between staff and pupils. Pupils feel safe and well.



# Physical education and school sport

Physical education is an integral part of the Bosworth experience, where knowledge and 6C skills and values established through physical education can be directly transferred across the curriculum, into school life and the real world.

The Academy has excellent facilities for physical education and school sport. Including a multi purpose sports hall with a conditioning room attached to a traditional gymnasium, a dance studio, a 25 metre indoor swimming pool and both covered and outdoor 3G rubber crumb pitches ideal for training and invasion games. The basketball courts have recently been refurbished to the highest standard. Our facilities are used extensively by our students and by groups in the wider community.

Lunchtime and after school activities provide opportunities for students of all abilities to try new activities, or continue with well established ones.

Many of our students belong to local sports clubs. Several students have links with local centres of sporting excellence, and have achieved outstanding success across a broad range of sports.

The Academy believes physical education is not just about physical ability, it helps to develop interactive social communication and leadership skills which play an important part in life. It also allows students an opportunity to improve emotional wellbeing.

The provision of high quality opportunities supports pupil's personal development.



## Developing physical, social and emotional skills



# Real LiFE

The Real LiFE Curriculum is designed to foster a concept known as Student Agency which empowers learners to take ownership of their education and helps to develop the ability and will to positively influence themselves and the world around them. Student Agency has been identified by the OECD (Organisation for Economic Co-operation and Development) as crucial in preparing young people to thrive in a world where many of the issues, challenges and jobs they will encounter as adults do not yet exist. Student Agency has also been linked to many other benefits including improved confidence, motivation, wellbeing, emotional control and cognitive executive functioning, all of which are rather helpful to the chances of achieving well both academically and socially!

In practice, the Real LiFE Curriculum is simple. It coordinates learning from a range of subjects through cross-curricular missions, where students are challenged to respond to a problem or issue themed around one of the UN Global Goals. For example, during Year 7 our students combine learning from English, Science, Maths, Geography and Computing to help them understand the problem of Climate Change and use this knowledge to design and build a prototype of a mobile app that persuades others to take positive Climate Action, and pitch their app idea to experts from the Green Tech industry.

The other key feature of the Real LiFE Curriculum is a session named CREW which delivers launch lessons for each mission and guides students in collating and preparing their final response that are presented during an event, showcase or exhibition. CREW also allows us to provide students with regular opportunities for Coaching, Reflection, Enrichment and Wellbeing, while teaching key skills including critical thinking and time management that enable students to take greater responsibility for their learning while building on their personal strengths and interests.

The school's 6Cs approach, a values-based personal development curriculum, provides pupils with the opportunity to develop their broader employment skills.



## Out of hours learning

Students at the Academy benefit from the school's long history of providing a range of sport, health and fitness and extra-curricular classes to local community users as well as students. This has led to a mix of activities being enjoyed by members of the wider community, and so enriches the learning environment. We believe that learning is a life-long activity.

There is an on-site nursery run by the Academy and a Children's Centre has been based on the Academy site since 2008.

Our Out of Hours Sports Programme continues to provide opportunities to be physically active. We work in partnership with a range of sports clubs, teams and fitness organisations to offer provision for local users.

The Academy offers a programme of health and fitness activities that focus on participation and enjoyment for adults and children of all ages, including holiday clubs.

Pupils are empowered and enabled to make a difference. They lead assemblies on important issues.

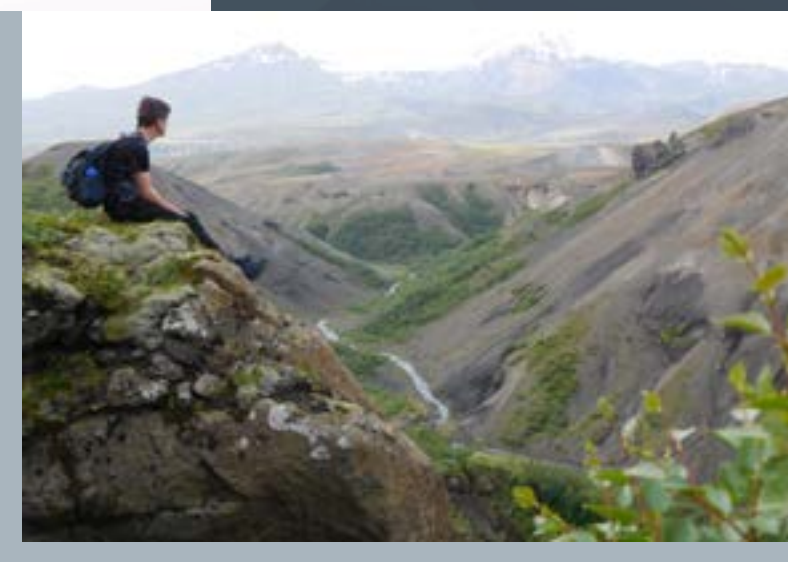




# Community



## Collaboration and involvement



### Links with the community

Students are encouraged to become involved with the wider community in a variety of ways.

Bosworth Academy's long standing links with the wider community including business, social, leisure and educational establishments, allow students to benefit from involvement with a broad and varied range of groups. This collaboration helps to develop students into successful and engaged members of the community.

Awareness and fund-raising in relation to local, national and international charities have become regular features of Academy life. A tutor group based fund-raising programme has been established where different tutor group's 'adopt a local charity' to support for the year. This activity includes students researching and gaining a fuller understanding of how their chosen charity operates, allowing students to become more closely engaged. The Academy has links with partner schools across Europe and worldwide.

The Academy uses a variety of strategies in order to receive feedback and comments from students regarding Academy policies and issues. Focus groups and the Student Voice offer suggestions on improving the environment, teaching and learning, and students and parents are encouraged to participate.

### Putting the Academy at the heart of the community

The outstanding facilities of the Academy are made available to local clubs, societies and groups providing a rich opportunity for students to experience learning, socialising and working with people of the community.



# Practical details

### Admissions

The usual September admissions procedures for 11 year old students are administered by Leicestershire County Council. There are a number of criteria which are applied to such admissions to prevent the school from becoming over-crowded.

This criteria is subject to change over time, therefore it is important to refer to [www.bosworthacademy.org.uk](http://www.bosworthacademy.org.uk) for the latest information regarding admissions.

### Dress code and uniform

Students benefit from a practical and attractive uniform

#### KS3 Laureates

- Grey skirt / tailored trousers
- White shirt
- Laureates sweater
- Black or white socks / tights
- Sensible, formal black shoes
- School tie

#### KS4 Academy

- Grey skirt / tailored trousers
- White shirt
- Bosworth Academy sweater (recommended)
- Bosworth Academy blazer / jacket
- Black or white socks / tights
- Sensible, formal black shoes
- School tie

Full details of uniform and dress code, along with access to the on-line shop is available via [www.bosworthacademy.org.uk/uniform](http://www.bosworthacademy.org.uk/uniform)

All students are required to wear a lanyard in school containing their personal ID card, which also functions as an access swipe card to various areas within the school, a bus pass and a cashless catering card. All students will need to bring a suitable bag.

PE kit is compulsory. It is essential that students have a complete change of clothes that is clean and suitable for any activity, including appropriate footwear. In some practical lessons students are advised to wear protective clothing in the interests of safety and hygiene.

### Catering

The Academy has designated Healthy Schools status. Our canteen operates a cashless catering system, with a choice of hot meals, sandwiches and snacks. Alternatively, students may bring a packed lunch. Students must only eat or drink in the designated areas.

### Complaints procedure

The Governing Body has produced guidance on procedures to be followed should a parent wish to make a complaint. This is available on the Bosworth Academy website at [bosworthacademy.org.uk](http://bosworthacademy.org.uk)

We would always like to feel we are an 'open' school, welcoming parental contact even if it is critical. In the first instance, we suggest you contact the Headteacher, who will listen sympathetically. We have usually found that parental anxiety is immediately reduced after contact has been made.

### Personal belongings

The Academy accepts no liability for loss or damage to personal belongings, and so we encourage students not to bring valuables into school. Incidents of suspected theft should be reported to the police by parents/carers.

Bosworth Academy is a non-smoking school. Staff are authorised to confiscate alcohol, cigarettes or vapes that are brought onto the site, and parents/carers will be contacted immediately.

### Admissions and Transport

Our Academy Trust, as the Admission Authority, manages its own in-year admissions. Details about admissions can be found on our website. To contact the admissions team within the Trust and its schools please email – [admissions@lifemultiacademytrust.org.uk](mailto:admissions@lifemultiacademytrust.org.uk). Transport to the Academy is provided by Roberts and details of routes can be found on their website or by contacting them directly.

### Mobile devices and valuables

The use of mobile technology and devices, when used appropriately in lessons is encouraged. However, devices will be confiscated if used inappropriately. The Academy accepts no responsibility for loss or damage to such articles under any circumstances.

### Anti-bullying policy

#### Conflict Resolution and Personal Safety

Recent research suggests that there are people with the potential for bullying and harassment in all organisations. In partnership with students and parents, we are committed to providing a safe and secure learning environment where bullying or harassment, in any form, is unacceptable. Bullying can be either a deliberate desire to hurt another, or a pattern of behaviour that puts others under stress. We recognise that not all bullying incidents are the same. We are committed to dealing with any incidents quickly, in a firm and fair manner, with an aim to eliminate bullying altogether.

### Induction

At Bosworth Academy, we work with the whole family of schools in our area concerned with 5-19 education. There are meetings of teachers from the various schools to plan and work within subject areas. The school holds introductory Parents' Meetings and Information Evenings with all new students and parents. Across the year, the Academy hosts a series of Open Events for students and parents to visit the school and discuss course choices and options. All prospective students are interviewed by a member of staff before joining the school. This enables us to start to get to know incoming students, and allows them to ask questions and become more confident about their new school. Later in the summer term, new students spend an Induction period at the Academy. This gives them the opportunity to look around, meet their tutor, experience Bosworth Academy lessons and become more familiar with their new school. For full details visit [bosworthacademy.org.uk](http://bosworthacademy.org.uk)

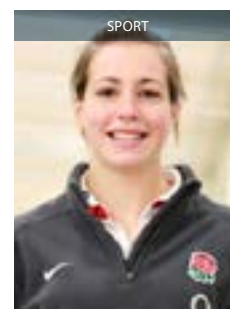
The information provided in this prospectus is accurate at time of print, however please refer to [www.bosworthacademy.org.uk](http://www.bosworthacademy.org.uk) for the latest updated data.



# Alumni



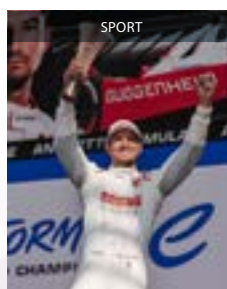
Adam Smith  
Michelin Star Chef



Emily Scarratt  
England Women's Rugby  
World Cup Winner



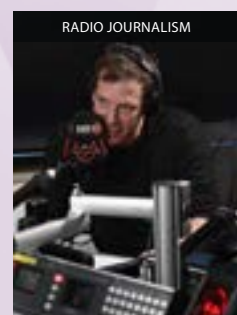
Ellie Henman  
Showbiz Editor, The Sun



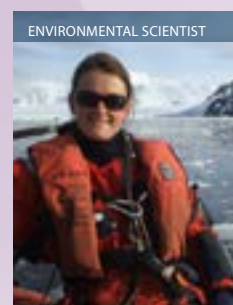
Jake Dennis  
Formula E  
World Champion



Tamsin Greenway  
England Netball Player  
Coach and Pundit



Mike Williams  
BBC Radio 2 Sports  
Correspondent



Dr Sian Henley  
Research Scientist  
Antarctica

## Bosworth former students

For over 50 years Bosworth Academy students have been achieving outstanding success in both academic results, as well as enjoying rewarding careers across numerous industry sectors from medicine to music, from engineering to economics.

Through work placement, volunteering or employment, former students are very supportive and keen to keep in touch and help.

The annual Excellence Evening is another example of former students acting as role models for our current students, helping raise and drive aspirations. Ex-students present awards at both Key Stage 4 (16) and Key Stage 5 (18) that carry their name as 'Alumni' who have gone on to excel in their chosen field, many acknowledging that the passion for their subject and subsequent career was inspired by their experiences and opportunities created at Bosworth Academy.

Former students who have achieved outstanding success in both sport and medicine have returned to address the staff, offering them an insight into life beyond Bosworth Academy and how our learning can continue as a result of their achievements and experiences.

The Heroes project, and 'Hall of Fame' it generates, has become a rich source of knowledge and inspiration for our current students to draw upon.



Hannah Drakeford  
Creative Designer



Jonathan Pesic Smith  
Neuro Surgeon

## Bosworth Academy is part of **LIFE** MULTI ACADEMY TRUST

### Vision

- We have a compelling desire to provide high quality, personalised and rounded education for everyone, right in the heart of our local community. We believe that no school can be deemed successful unless all those around it are also successful, popular and flourishing. Hence we believe that dynamic, mutually accountable collaboration and challenge between local schools as members of the LIFE MAT is the cornerstone of our future success.
- Each school is seen as a leader of and vital to its local community; each school is regarded as fundamental to the identity of it's surrounding community.

### Values

- Ensuring that every student achieves positive, life changing outcomes.
- Providing a whole education; academic excellence co-existing with an exceptional commitment to activity beyond.
- The relentless pursuit of excellence by; expecting this of every person, every day; recognising and celebrating behaviours that lead to great progress, and promoting and celebrating elite performance inside school, and in the wider world.
- Valuing the diversity and qualities of our staff and students.
- Ensuring that all students and staff feel known, appreciated and supported.
- Committing whole-heartedly to collaboration within, between and beyond our academies.

### Mission

- Outcomes equal to the best nationally and internationally for every school and every child.
- Every child receives a truly rounded education resulting in a strong moral compass, a globally competitive skill set, and a confident sense of self.
- Every school is a hub for community activities, a centre for extended services, and a source of immense pride for students, their families and other local stakeholders.
- Providing high quality buildings, engaging classrooms and excellent sporting facilities.
- Delivering innovative learning resources and materials.
- Ensuring a well-disciplined and caring environment.
- Exploiting cutting edge technologies to expand the opportunities for students, staff and our community to benefit from learning in a digital age.

Bringing  
learning  
to life

Where will Bosworth  
Academy take you?





TO LEARN TO ACHIEVE

## Contact

Please do not hesitate to contact us if you would like to arrange a visit to the Academy; we would be very happy to show you around. You are always welcome to telephone if you have any questions you would like to discuss with us.

Bosworth Academy  
Leicester Lane  
Desford  
Leicester  
LE9 9JL

01455 822841  
office@bosworthacademy.org.uk  
bosworthacademy.org.uk

Headteacher:  
Simon Brown

For every step of their journey...



Instagram

@bosworthacademy



X (formerly known as Twitter)

@bosworthacademy



Facebook

facebook.com/BosworthAcademy



YouTube

YouTube.com/BosworthAcademy



**KS3**

Ages 11–13  
The  
Laureates



**KS4**

Ages 14–16  
The  
Academy



**KS5**

Ages 16 plus  
The  
Oaks

